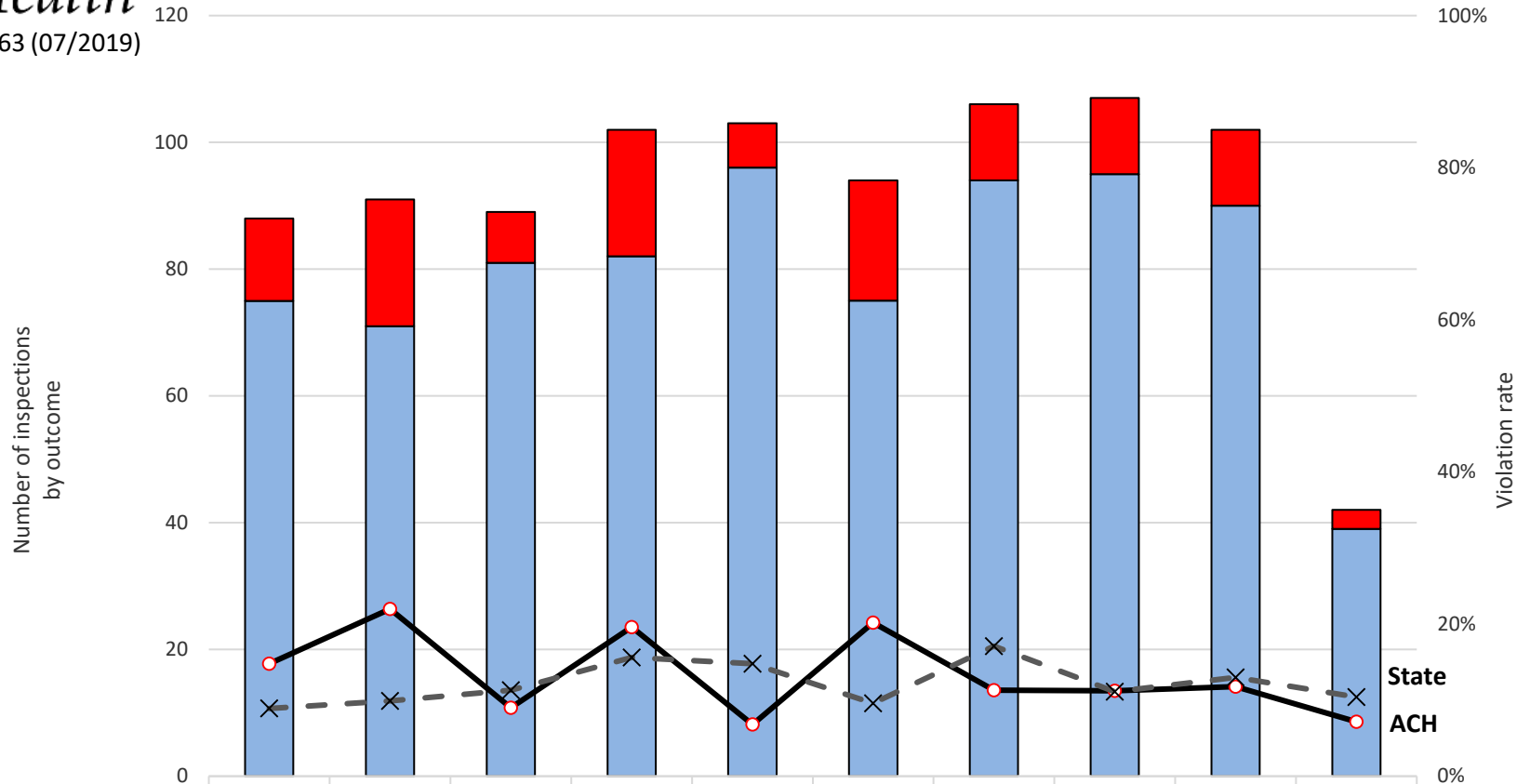




DOH340-163 (07/2019)

## Sales of Tobacco to Minors North Central ACH and Washington State



	2009	2010	2011	2012	2013	2014	2015	2016	2017	2018
<span style="color: red;">■</span> # of ACH violations	13	20	8	20	7	19	12	12	12	3
<span style="color: blue;">■</span> # of compliant ACH checks	75	71	81	82	96	75	94	95	90	39
<span style="color: black;">—●—</span> ACH violation rate	14.8%	22.0%	9.0%	19.6%	6.8%	20.2%	11.3%	11.2%	11.8%	7.1%
<span style="color: grey;">-X-</span> State violation rate	8.9%	9.9%	11.3%	15.6%	14.8%	9.6%	17.1%	11.1%	13.0%	10.4%

Source: Washington State Department of Health  
Synar Compliance Check Database 2009-2018

Technical note: Overall statewide rates are based on a yearly state Synar sample. County attempts represent only eligible and completed attempts. County specific rates are based on a county oversample that is not a part of the state sample. Counties were not oversampled in 2018.

North Central Accountable Community of Health (ACH) counties: Chelan, Douglas, Grant, and Okanogan