

Washington State Immunization Information System

The Washington State Immunization Information System (WAIS) is a voluntary web-based lifetime registry that contains immunization records for Washington residents of all ages. The system adheres to all federal and state security guidelines to ensure data is protected. The WAIS can help prevent individuals from receiving too many or too few vaccinations, save time and money, and improve patient care.

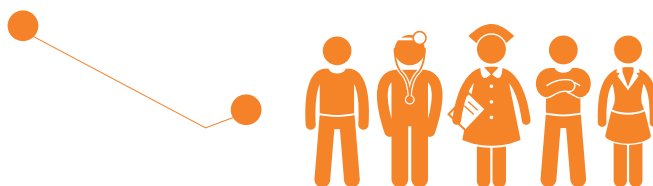
System Users

+ **1 700 ORGANIZATIONS**
4 500 FACILITIES

healthcare organizations, clinics, hospitals, pharmacies, public health, schools, early learning programs, and health plans

20 000 INDIVIDUALS

healthcare providers, clinical staff, state and local public health staff, pharmacists, school nurses, and other authorized entities



How Data Enters the System



+ **240 ORGANIZATIONS**
2 300 LOCATIONS

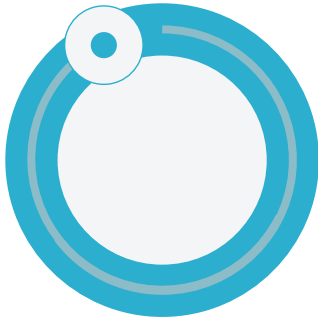
93% of data enters through electronic data exchange with electronic health records (EHRs). The WAIS aligns with national standards and guidelines to support these data exchanges.

New patients and vaccinations are also added to the system through uploads of birth certificate and manually entered data. Since WAIS operates under implied consent, individuals may opt out.

How Complete & Timely is the Data

Data Source: 2019 WAIS Annual Report

98%



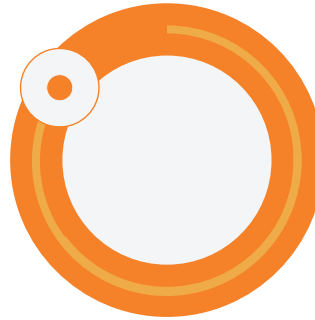
children 4 mo - 5 yr
have at least 2
vaccines recorded

94%



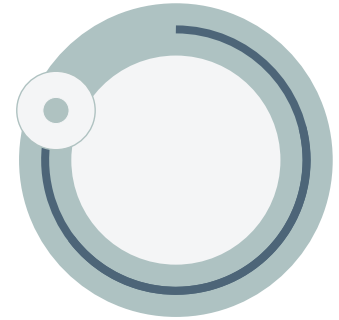
teens 11 - 17 yr
have at least 2
adolescent vaccines
recorded

85%



adults 19+ have at
least 1 adult
vaccine recorded

80%



vaccinations given to
patients under age of
18 were recorded in
one day or less

Benefits of the System



ACCESS

to comprehensive immunization records and pre-populated forms that are required for school and child care entry



OPERATIONS

assists with ordering, receiving, managing vaccine inventory, and submitting reports for clinics enrolled in the Childhood Vaccine Program



SCHEDULE

forecasts and displays which immunizations are due or overdue for an individual



MEASUREMENT

of immunization coverage and identifies patients who are due or overdue for vaccines



DATA

to measure national, state, and local immunization coverage



SCHOOLS

assists in monitoring compliance with school immunization requirements



DATA EXCHANGE

supports electronic data exchange between the WAIS and healthcare provider EHRs



TOOLS

provides tools to support routine monitoring of incoming data from EHRs



SUPPORT

provides support to Child Profile Health Promotion System that sends child health and safety information to parents of children birth to 6 yr old in WA State



MyIR

provides access to records through MyIR, an online portal for access to immunization records



RESPONSE

supports response to vaccine-preventable disease outbreaks

To request this document in another format, call 1-800-525-0127. Deaf or hard of hearing customers, please call 711 (Washington Relay) or email civil.rights@doh.wa.gov.



DOH Pub 348-760 | May 1, 2020