



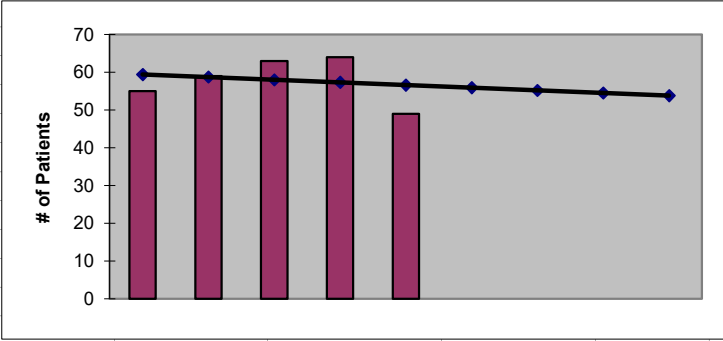
2022
Walla Walla County
ESRD Need Projection Methodology

Planning Area		6 Year Utilization Data - Resident Incenter Patients					
Walla Walla		2016	2017	2018	2019	2020	2021
Walla Walla County		58	55	59	63	64	49
TOTALS		58	55	59	63	64	49
246-310-812(4)(a)	Rate of Change		-5.17%	7.27%	6.78%	1.59%	-23.44%
	6% Growth or Greater?		FALSE	TRUE	TRUE	FALSE	FALSE
	Regression Method:	Linear					
246-310-812(4)(c)			Year 1 2022	Year 2 2023	Year 3 2024	Year 4 2025	Year 5 2026
Projected Resident Incenter Patients	from 246-310-812(4)(b)		55.90	55.20	54.50	53.80	53.10
Station Need for Patients	Divide Resident Incenter by 4.8		11.65	11.50	11.35	11.21	11.06
	Rounded to next whole number		12	12	12	12	12
246-310-812(4)(d)	subtract (4)(c) from approved stations						
Existing CN Approved Stations	Total		16	16	16	16	16
Results of (4)(c) above			12	12	12	12	12
Net Station Need			4	4	4	4	4
Negative number indicates need for stations							
Planning Area Facilities							
Name of Center	# of Stations						
QualiCenter Walla Walla	16						
Total	16						
Source: Northwest Renal Network / Comagine ESRD Network 16 data 2016-2021							
Most recent year-end data: 2021 posted 03/15/2022							



2022
Walla Walla County
ESRD Need Projection Methodology

x	y	Linear
2017	55	59
2018	59	59
2019	63	58
2020	64	57
2021	49	57
2022		55.90
2023		55.20
2024		54.50
2025		53.80
2026		53.10



SUMMARY OUTPUT

<i>Regression Statistics</i>	
Multiple R	0.179546212
R Square	0.032236842
Adjusted R Square	-0.290350877
Standard Error	7.002380548
Observations	5

ANOVA					
	<i>df</i>	<i>SS</i>	<i>MS</i>	<i>F</i>	<i>Significance F</i>
Regression	1	4.9	4.9	0.099932019	0.772628924
Residual	3	147.1	49.03333333		
Total	4	152			

	<i>Coefficients</i>	<i>Standard Error</i>	<i>t Stat</i>	<i>P-value</i>	<i>Lower 95%</i>	<i>Upper 95%</i>	<i>Lower 95.0%</i>	<i>Upper 95.0%</i>
Intercept	1471.3	4470.768007	0.329093345	0.763721181	-12756.67913	15699.27913	-12756.7	15699.28
X Variable 1	-0.7	2.214347157	-0.31612026	0.772628924	-7.74704093	6.34704093	-7.74704	6.347041