



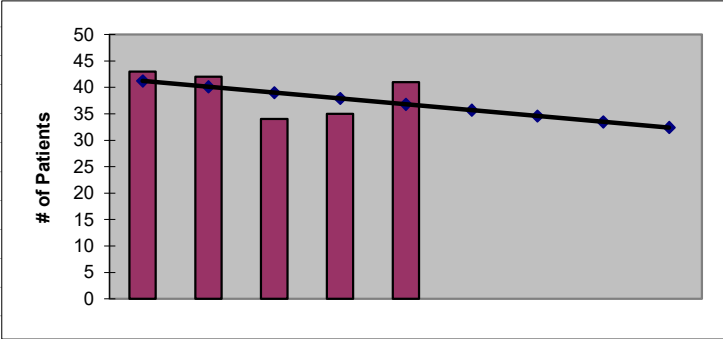
2022
Clallam County
ESRD Need Projection Methodology

Planning Area		6 Year Utilization Data - Resident Incenter Patients					
Clallam		2016	2017	2018	2019	2020	2021
Clallam County		37	43	42	34	35	41
TOTALS		37	43	42	34	35	41
246-310-812(4)(a)	Rate of Change		16.22%	-2.33%	-19.05%	2.94%	17.14%
	6% Growth or Greater?		TRUE	FALSE	FALSE	FALSE	TRUE
	Regression Method:	Linear					
246-310-812(4)(c)			Year 1 2022	Year 2 2023	Year 3 2024	Year 4 2025	Year 5 2026
Projected Resident Incenter Patients Station Need for Patients	from 246-310-812(4)(b)		35.70	34.60	33.50	32.40	31.30
	Divide Resident Incenter by 4.8		7.44	7.21	6.98	6.75	6.52
	Rounded to next whole number		8	8	7	7	7
246-310-812(4)(d)	subtract (4)(c) from approved stations						
Existing CN Approved Stations	Total		10	10	10	10	10
Results of (4)(c) above			8	8	7	7	7
Net Station Need			2	2	3	3	3
Negative number indicates need for stations							
Planning Area Facilities							
Name of Center	# of Stations						
NKC Port Angeles	10						
Total	10						
Source: Northwest Renal Network / Comagine ESRD Network 16 data 2016-2021 Most recent year-end data: 2021 posted 03/15/2022							



2022
Clallam County
ESRD Need Projection Methodology

x	y	Linear
2017	43	41
2018	42	40
2019	34	39
2020	35	38
2021	41	37
2022		35.70
2023		34.60
2024		33.50
2025		32.40
2026		31.30



SUMMARY OUTPUT

<i>Regression Statistics</i>	
Multiple R	0.41576092
R Square	0.172857143
Adjusted R Square	-0.102857143
Standard Error	4.393176527
Observations	5

ANOVA					
	<i>df</i>	<i>SS</i>	<i>MS</i>	<i>F</i>	<i>Significance F</i>
Regression	1	12.1	12.1	0.626943005	0.486309578
Residual	3	57.9	19.3		
Total	4	70			

	<i>Coefficients</i>	<i>Standard Error</i>	<i>t Stat</i>	<i>P-value</i>	<i>Lower 95%</i>	<i>Upper 95%</i>	<i>ower 95.0%</i>	<i>pper 95.0%</i>
Intercept	2259.9	2804.88513	0.805701444	0.479359173	-6666.496317	11186.29632	-6666.5	11186.3
X Variable 1	-1.1	1.389244399	-0.791797326	0.486309578	-5.521195705	3.321195705	-5.5212	3.321196