



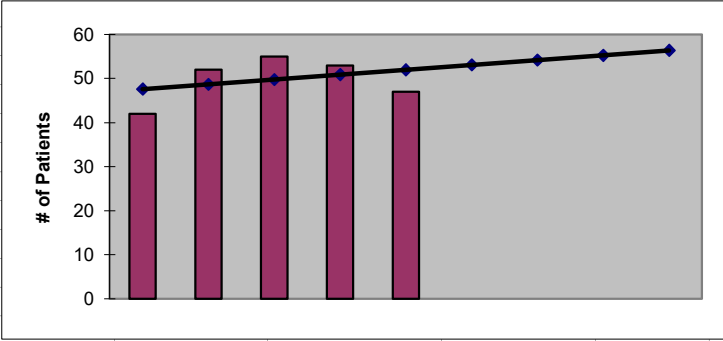
2022
Island County
ESRD Need Projection Methodology

Planning Area		6 Year Utilization Data - Resident Incenter Patients					
Island		2016	2017	2018	2019	2020	2021
Island County		55	54	60	63	58	51
Less 98282 to Sno #1		-10	-12	-8	-8	-5	-4
TOTALS		45	42	52	55	53	47
246-310-812(4)(a)	Rate of Change		-6.67%	23.81%	5.77%	-3.64%	-11.32%
	6% Growth or Greater?		FALSE	TRUE	FALSE	FALSE	FALSE
	Regression Method:	Linear					
246-310-812(4)(c)			Year 1 2022	Year 2 2023	Year 3 2024	Year 4 2025	Year 5 2026
Projected Resident Incenter Patients	from 246-310-812(4)(b)		53.10	54.20	55.30	56.40	57.50
Station Need for Patients	Divide Resident Incenter by 4.8		11.06	11.29	11.52	11.75	11.98
	Rounded to next whole number		12	12	12	12	12
246-310-812(4)(d)	subtract (4)(c) from approved stations						
Existing CN Approved Stations	Total		15	15	15	15	15
Results of (4)(c) above			12	12	12	12	12
Net Station Need			3	3	3	3	3
Negative number indicates need for stations							
Planning Area Facilities							
Name of Center	# of Stations						
PSKC Whidbey Island	9						
DaVita Whidbey	6						
Total	15						
Source: Northwest Renal Network / Comagine ESRD Network 16 data 2016-2021							
Most recent year-end data: 2021 posted 03/15/2022							



**2022
Island County
ESRD Need Projection Methodology**

x	y	Linear
2017	42	48
2018	52	49
2019	55	50
2020	53	51
2021	47	52
2022		53.10
2023		54.20
2024		55.30
2025		56.40
2026		57.50



SUMMARY OUTPUT

<i>Regression Statistics</i>	
Multiple R	0.330462972
R Square	0.109205776
Adjusted R Square	-0.187725632
Standard Error	5.73585216
Observations	5

ANOVA					
	<i>df</i>	<i>SS</i>	<i>MS</i>	<i>F</i>	<i>Significance F</i>
Regression	1	12.1	12.1	0.367781155	0.587030304
Residual	3	98.7	32.9		
Total	4	110.8			

	<i>Coefficients</i>	<i>Standard Error</i>	<i>t Stat</i>	<i>P-value</i>	<i>Lower 95%</i>	<i>Upper 95%</i>	<i>Lower 95.0%</i>	<i>Upper 95.0%</i>
Intercept	-2171.1	3662.135206	-0.592850858	0.59500144	-13825.64866	9483.448657	-13825.6	9483.449
X Variable 1	1.1	1.813835715	0.606449631	0.587030304	-4.672434769	6.872434769	-4.67243	6.872435