



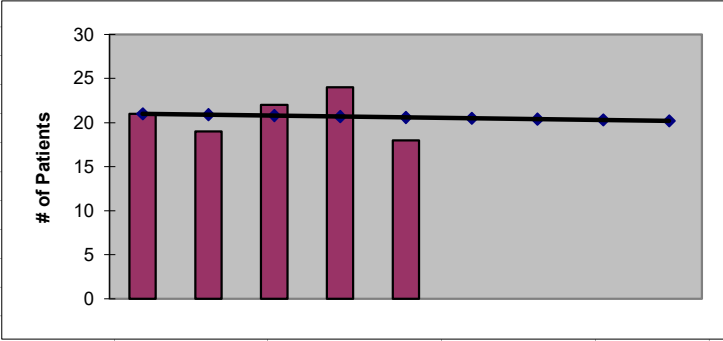
2022
Jefferson County
ESRD Need Projection Methodology

Planning Area		6 Year Utilization Data - Resident Incenter Patients					
Jefferson		2016	2017	2018	2019	2020	2021
Jefferson County		13	21	19	22	24	18
TOTALS		13	21	19	22	24	18
246-310-812(4)(a)	Rate of Change		61.54%	-9.52%	15.79%	9.09%	-25.00%
	6% Growth or Greater?		TRUE	FALSE	TRUE	TRUE	FALSE
	Regression Method:	Linear					
246-310-812(4)(c)			Year 1 2022	Year 2 2023	Year 3 2024	Year 4 2025	Year 5 2026
Projected Resident Incenter Patients	from 246-310-812(4)(b)		20.50	20.40	20.30	20.20	20.10
Station Need for Patients	Divide Resident Incenter by 3.2		6.41	6.38	6.34	6.31	6.28
	Rounded to next whole number		7	7	7	7	7
246-310-812(4)(d)	subtract (4)(c) from approved stations						
Existing CN Approved Stations	Total		6	6	6	6	6
Results of (4)(c) above			7	7	7	7	7
Net Station Need			-1	-1	-1	-1	-1
Negative number indicates need for stations							
Planning Area Facilities							
Name of Center	# of Stations						
OPKC - Port Townsend	6						
Total	6						
Source: Northwest Renal Network / Comagine ESRD Network 16 data 2016-2021							
Most recent year-end data: 2021 posted 03/15/2022							



2022
Jefferson County
ESRD Need Projection Methodology

x	y	Linear
2017	21	21
2018	19	21
2019	22	21
2020	24	21
2021	18	21
2022		20.50
2023		20.40
2024		20.30
2025		20.20
2026		20.10



SUMMARY OUTPUT

<i>Regression Statistics</i>	
Multiple R	0.066226618
R Square	0.004385965
Adjusted R Square	-0.32748538
Standard Error	2.750757471
Observations	5

ANOVA					
	<i>df</i>	<i>SS</i>	<i>MS</i>	<i>F</i>	<i>Significance F</i>
Regression	1	0.1	0.1	0.013215859	0.915739331
Residual	3	22.7	7.566666667		
Total	4	22.8			

	<i>Coefficients</i>	<i>Standard Error</i>	<i>t Stat</i>	<i>P-value</i>	<i>Lower 95%</i>	<i>Upper 95%</i>	<i>ower 95.0%</i>	<i>pper 95.0%</i>
Intercept	222.7	1756.259663	0.126803573	0.907117503	-5366.502075	5811.902075	-5366.5	5811.902
X Variable 1	-0.1	0.86986589	-0.11496025	0.915739331	-2.868301488	2.668301488	-2.8683	2.668301