



2022
King County 1
ESRD Need Projection Methodology

Planning Area	6 Year Utilization Data - Resident Incenter Patients					
King 1	2016	2017	2018	2019	2020	2021
98028	11	10	13	15	12	12
98103	19	19	20	24	17	15
98105	13	12	13	10	11	11
98107	12	12	10	6	6	4
98115	12	12	13	17	11	13
98117	21	18	16	16	23	24
98125	48	46	45	44	34	41
98133	64	67	64	61	62	63
98155	27	36	34	34	37	39
98177	13	16	17	13	10	8
98195	0	0	1	0	0	0
TOTALS	240	248	246	240	223	230

246-310-812(4)(a)	Rate of Change	3.33%	-0.81%	-2.44%	-7.08%	3.14%
	6% Growth or Greater?	FALSE	FALSE	FALSE	FALSE	FALSE
	Regression Method:	Linear				

246-310-812(4)(c)		Year 1 2022	Year 2 2023	Year 3 2024	Year 4 2025	Year 5 2026
Projected Resident Incenter Patients	from 246-310-812(4)(b)	219.70	213.80	207.90	202.00	196.10
Station Need for Patients	Divide Resident Incenter by 4.8	45.77	44.54	43.31	42.08	40.85
	Rounded to next whole number	46	45	44	43	41

246-310-812(4)(d)	subtract (4)(c) from approved stations					
Existing CN Approved Stations	Total	61	61	61	61	61
Results of (4)(c) above		46	45	44	43	41
Net Station Need		15	16	17	18	20

Negative number indicates need for stations

Planning Area Facilities

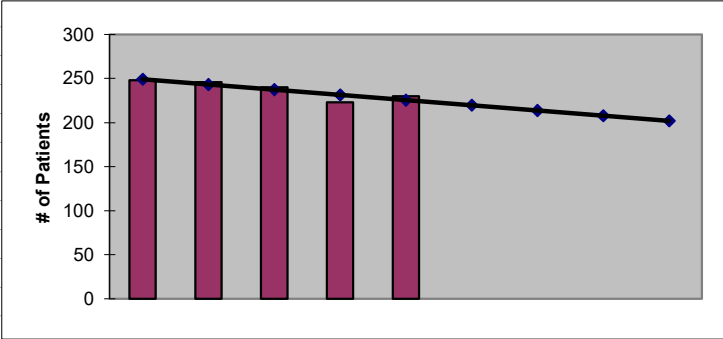
Name of Center	# of Stations	
NKC - Lake City	20	
NKC - Scribner	22	
PSKC-Richmond Beach	19	
Seattle Children's Hosp	9	Note: These stations are not counted in the numeric methodology
Total	61	

Source: Northwest Renal Network / Comagine ESRD Network 16 data 2016-2021
 Most recent year-end data: 2021 posted 03/15/2022



2022
King County 1
ESRD Need Projection Methodology

x	y	Linear
2017	248	249
2018	246	243
2019	240	237
2020	223	232
2021	230	226
2022		219.70
2023		213.80
2024		207.90
2025		202.00
2026		196.10



SUMMARY OUTPUT

<i>Regression Statistics</i>	
Multiple R	0.874482021
R Square	0.764718805
Adjusted R Square	0.68629174
Standard Error	5.974947699
Observations	5

ANOVA					
	<i>df</i>	<i>SS</i>	<i>MS</i>	<i>F</i>	<i>Significance F</i>
Regression	1	348.1	348.1	9.75070028	0.052365142
Residual	3	107.1	35.7		
Total	4	455.2			

	<i>Coefficients</i>	<i>Standard Error</i>	<i>t Stat</i>	<i>P-value</i>	<i>Lower 95%</i>	<i>Upper 95%</i>	<i>ower 95.0%</i>	<i>pper 95.0%</i>
Intercept	12149.5	3814.789104	3.184841853	0.049908146	9.138509703	24289.86149	9.13851	24289.86
X Variable 1	-5.9	1.889444363	-3.122611132	0.052365142	-11.91305523	0.113055231	-11.9131	0.113055