



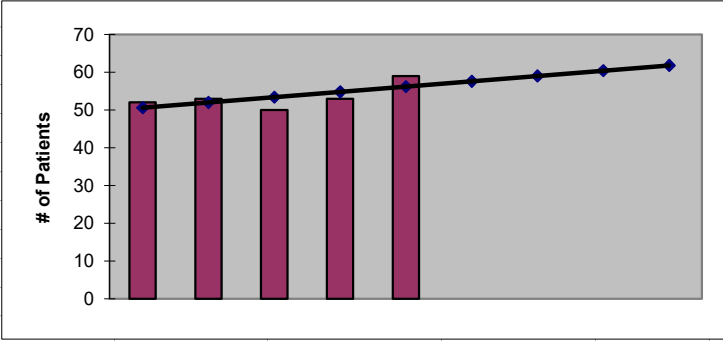
**2022**  
**Okanogan County**  
**ESRD Need Projection Methodology**

Planning Area		6 Year Utilization Data - Resident Incenter Patients					
Okanogan		2016	2017	2018	2019	2020	2021
Okanogan County		43	52	53	50	53	59
<b>TOTALS</b>		<b>43</b>	<b>52</b>	<b>53</b>	<b>50</b>	<b>53</b>	<b>59</b>
<b>246-310-812(4)(a)</b>	Rate of Change		20.93%	1.92%	-5.66%	6.00%	11.32%
	6% Growth or Greater?		TRUE	FALSE	FALSE	TRUE	TRUE
	Regression Method:	Linear					
<b>246-310-812(4)(c)</b>			Year 1 2022	Year 2 2023	Year 3 2024	Year 4 2025	Year 5 2026
Projected Resident Incenter Patients	from 246-310-812(4)(b)		57.60	59.00	60.40	61.80	<b>63.20</b>
Station Need for Patients	Divide Resident Incenter by 3.2		18.00	18.44	18.88	19.31	<b>19.75</b>
	Rounded to next whole number		<b>18</b>	<b>19</b>	<b>19</b>	<b>20</b>	<b>20</b>
<b>246-310-812(4)(d)</b>	subtract (4)(c) from approved stations						
Existing CN Approved Stations	Total		17	17	17	17	17
Results of (4)(c) above			18	19	19	20	20
Net Station Need			-1	-2	-2	-3	-3
Negative number indicates need for stations							
<b>Planning Area Facilities</b>							
Name of Center	# of Stations						
FMC Omak	17						
<b>Total</b>	<b>17</b>						
Source: Northwest Renal Network / Comagine ESRD Network 16 data 2016-2021 Most recent year-end data: 2021 posted 03/15/2022							



**2022**  
**Okanogan County**  
**ESRD Need Projection Methodology**

x	y	Linear
2017	52	51
2018	53	52
2019	50	53
2020	53	55
2021	59	56
2022		57.60
2023		59.00
2024		60.40
2025		61.80
2026		63.20



**SUMMARY OUTPUT**

<i>Regression Statistics</i>	
Multiple R	0.658504608
R Square	0.433628319
Adjusted R Square	0.244837758
Standard Error	2.921186973
Observations	5

<b>ANOVA</b>					
	<i>df</i>	<i>SS</i>	<i>MS</i>	<i>F</i>	<i>Significance F</i>
Regression	1	19.6	19.6	2.296875	0.226885625
Residual	3	25.6	8.533333333		
Total	4	45.2			

	<i>Coefficients</i>	<i>Standard Error</i>	<i>t Stat</i>	<i>P-value</i>	<i>Lower 95%</i>	<i>Upper 95%</i>	<i>ower 95.0%</i>	<i>pper 95.0%</i>
Intercept	-2773.2	1865.072767	-1.486912494	0.233748917	-8708.693937	3162.293937	-8708.69	3162.294
X Variable 1	1.4	0.923760431	1.515544457	0.226885625	-1.53981797	4.33981797	-1.53982	4.339818