

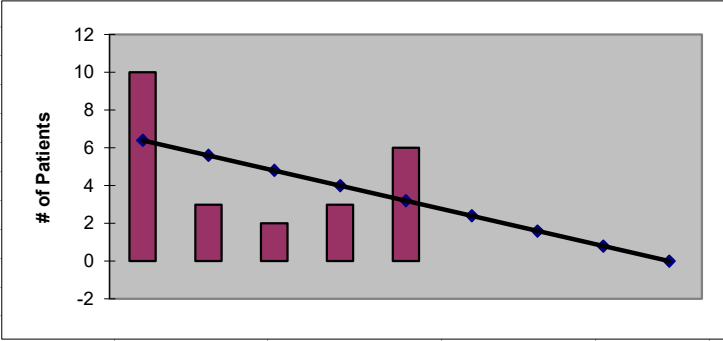


2022
Pend Orielle County
ESRD Need Projection Methodology

	Planning Area	6 Year Utilization Data - Resident Incenter Patients					
	Pend Orielle	2016	2017	2018	2019	2020	2021
	Pend Orielle County	15	16	9	7	7	10
	Less 99009 to Spokane 2	-5	-6	-6	-5	-4	-4
	TOTALS	10	10	3	2	3	6
246-310-812(4)(a)	Rate of Change		0.00%	-70.00%	-33.33%	50.00%	100.00%
	6% Growth or Greater?		FALSE	FALSE	FALSE	TRUE	TRUE
	Regression Method:	Linear					
246-310-812(4)(c)			Year 1 2022	Year 2 2023	Year 3 2024	Year 4 2025	Year 5 2026
Projected Resident Incenter Patients	from 246-310-812(4)(b)		2.40	1.60	0.80	0.00	-0.80
Station Need for Patients	Divide Resident Incenter by 3.2		0.75	0.50	0.25	0.00	-0.25
	Rounded to next whole number		1	1	1	0	-1
246-310-812(4)(d)	subtract (4)(c) from approved stations						
Existing CN Approved Stations	Total		0	0	0	0	0
Results of (4)(c) above			1	1	1	0	-1
Net Station Need			-1	-1	-1	0	1
Negative number indicates need for stations							
Planning Area Facilities							
Name of Center	# of Stations						
None	0						
Total	0						
Source: Northwest Renal Network / Comagine ESRD Network 16 data 2016-2021							
Most recent year-end data: 2021 posted 03/15/2022							

2022
Pend Oreille County
ESRD Need Projection Methodology

x	y	Linear
2017	10	6
2018	3	6
2019	2	5
2020	3	4
2021	6	3
2022		2.40
2023		1.60
2024		0.80
2025		0.00
2026		-0.80



SUMMARY OUTPUT

<i>Regression Statistics</i>	
Multiple R	0.386694596
R Square	0.14953271
Adjusted R Square	-0.133956386
Standard Error	3.483293461
Observations	5

ANOVA					
	<i>df</i>	<i>SS</i>	<i>MS</i>	<i>F</i>	<i>Significance F</i>
Regression	1	6.4	6.4	0.527472527	0.52020677
Residual	3	36.4	12.13333333		
Total	4	42.8			

	<i>Coefficients</i>	<i>Standard Error</i>	<i>t Stat</i>	<i>P-value</i>	<i>Lower 95%</i>	<i>Upper 95%</i>	<i>ower 95.0%</i>	<i>pper 95.0%</i>
Intercept	1620	2223.957533	0.728431176	0.519060314	-5457.625433	8697.625433	-5457.63	8697.625
X Variable 1	-0.8	1.101514109	-0.726273039	0.52020677	-4.305509508	2.705509508	-4.30551	2.70551