



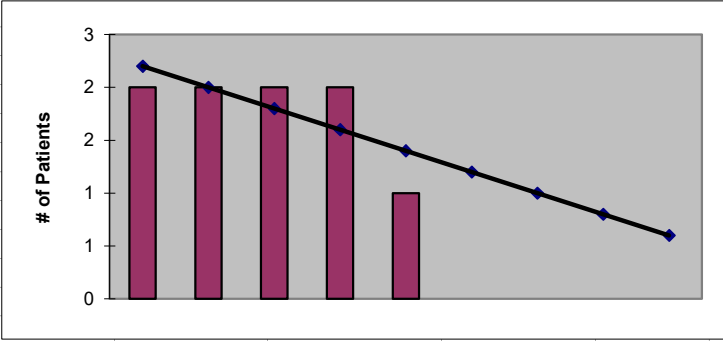
**2022**  
**San Juan County**  
**ESRD Need Projection Methodology**

Planning Area		6 Year Utilization Data - Resident Incenter Patients					
San Juan	2016	2017	2018	2019	2020	2021	
<b>San Juan County</b>	2	2	2	2	2	1	
<b>TOTALS</b>	2	2	2	2	2	1	
<b>246-310-812(4)(a)</b>	Rate of Change		0.00%	0.00%	0.00%	0.00%	-50.00%
	6% Growth or Greater?		FALSE	FALSE	FALSE	FALSE	FALSE
	Regression Method:	Linear					
<b>246-310-812(4)(c)</b>			Year 1 2022	Year 2 2023	Year 3 2024	Year 4 2025	Year 5 2026
Projected Resident Incenter Patients	from 246-310-812(4)(b)	1.20	1.00	0.80	0.60	<b>0.40</b>	
Station Need for Patients	Divide Resident Incenter by 3.2	0.37	0.31	0.25	0.19	<b>0.12</b>	
	Rounded to next whole number	<b>1</b>	<b>1</b>	<b>1</b>	<b>1</b>	<b>1</b>	
<b>246-310-812(4)(d)</b>	subtract (4)(c) from approved stations						
Existing CN Approved Stations	Total	0	0	0	0	<b>0</b>	
Results of (4)(c) above		1	1	1	1	<b>1</b>	
Net Station Need		-1	-1	-1	-1	<b>-1</b>	
Negative number indicates need for stations							
<b>Planning Area Facilities</b>							
Name of Center	# of Stations						
None	<b>0</b>						
<b>Total</b>	<b>0</b>						
Source: Northwest Renal Network / Comagine ESRD Network 16 data 2016-2021							
Most recent year-end data: 2021 posted 03/15/2022							



**2022**  
**San Juan County**  
**ESRD Need Projection Methodology**

x	y	Linear
2017	2	2
2018	2	2
2019	2	2
2020	2	2
2021	1	1
2022		1.20
2023		1.00
2024		0.80
2025		0.60
2026		0.40



**SUMMARY OUTPUT**

<i>Regression Statistics</i>	
Multiple R	0.707106781
R Square	0.5
Adjusted R Square	0.333333333
Standard Error	0.365148372
Observations	5

<b>ANOVA</b>					
	<i>df</i>	<i>SS</i>	<i>MS</i>	<i>F</i>	<i>Significance F</i>
Regression	1	0.4	0.4	3	0.181690114
Residual	3	0.4	0.133333333		
Total	4	0.8			

	<i>Coefficients</i>	<i>Standard Error</i>	<i>t Stat</i>	<i>P-value</i>	<i>Lower 95%</i>	<i>Upper 95%</i>	<i>ower 95.0%</i>	<i>pper 95.0%</i>
Intercept	405.6	233.1340959	1.739771261	0.180277583	-336.3367421	1147.536742	-336.337	1147.537
X Variable 1	-0.2	0.115470054	-1.732050808	0.181690114	-0.567477246	0.167477246	-0.56748	0.167477