



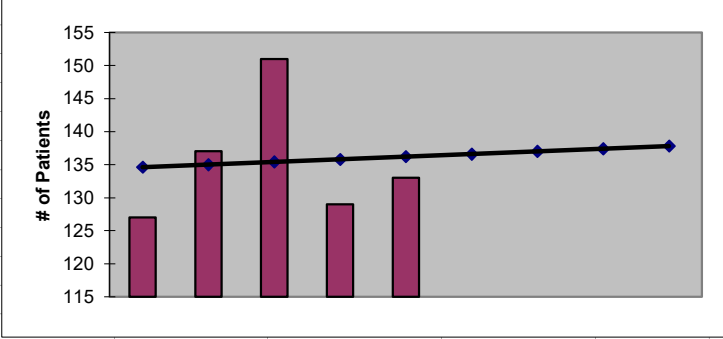
**2022**  
**Skagit County**  
**ESRD Need Projection Methodology**

Planning Area		6 Year Utilization Data - Resident Incenter Patients					
Skagit		2016	2017	2018	2019	2020	2021
Skagit County		127	127	137	151	129	133
<b>TOTALS</b>		<b>127</b>	<b>127</b>	<b>137</b>	<b>151</b>	<b>129</b>	<b>133</b>
<b>246-310-812(4)(a)</b>	Rate of Change		0.00%	7.87%	10.22%	-14.57%	3.10%
	6% Growth or Greater?		FALSE	TRUE	TRUE	FALSE	FALSE
	Regression Method:	Linear					
<b>246-310-812(4)(c)</b>			Year 1 2022	Year 2 2023	Year 3 2024	Year 4 2025	Year 5 2026
Projected Resident Incenter Patients	from 246-310-812(4)(b)		136.60	137.00	137.40	137.80	<b>138.20</b>
Station Need for Patients	Divide Resident Incenter by 4.8		28.46	28.54	28.63	28.71	<b>28.79</b>
	Rounded to next whole number		<b>29</b>	<b>29</b>	<b>29</b>	<b>29</b>	<b>29</b>
<b>246-310-812(4)(d)</b>	subtract (4)(c) from approved stations						
Existing CN Approved Stations	Total		39	39	39	39	<b>39</b>
Results of (4)(c) above			29	29	29	29	<b>29</b>
Net Station Need			10	10	10	10	<b>10</b>
Negative number indicates need for stations							
<b>Planning Area Facilities</b>							
Name of Center	# of Stations						
FMC Skagit Valley	27						
PSKC-Anacortes	6						
DaVita Cascade	6						
Total	<b>39</b>						
Source: Northwest Renal Network / Comagine ESRD Network 16 data 2016-2021							
Most recent year-end data: 2021 posted 03/15/2022							



**2022**  
**Skagit County**  
**ESRD Need Projection Methodology**

x	y	Linear
2017	127	135
2018	137	135
2019	151	135
2020	129	136
2021	133	136
2022		136.60
2023		137.00
2024		137.40
2025		137.80
2026		138.20



**SUMMARY OUTPUT**

<i>Regression Statistics</i>	
Multiple R	0.066372331
R Square	0.004405286
Adjusted R Square	-0.327459618
Standard Error	10.97876739
Observations	5

<b>ANOVA</b>					
	<i>df</i>	<i>SS</i>	<i>MS</i>	<i>F</i>	<i>Significance F</i>
Regression	1	1.6	1.6	0.013274336	0.915554211
Residual	3	361.6	120.5333333		
Total	4	363.2			

	<i>Coefficients</i>	<i>Standard Error</i>	<i>t Stat</i>	<i>P-value</i>	<i>Lower 95%</i>	<i>Upper 95%</i>	<i>ower 95.0%</i>	<i>pper 95.0%</i>
Intercept	-672.2	7009.547919	-0.095897768	0.929648723	-22979.70988	21635.30988	-22979.7	21635.31
X Variable 1	0.4	3.471791084	0.115214306	0.915554211	-10.64878871	11.44878871	-10.6488	11.44879