

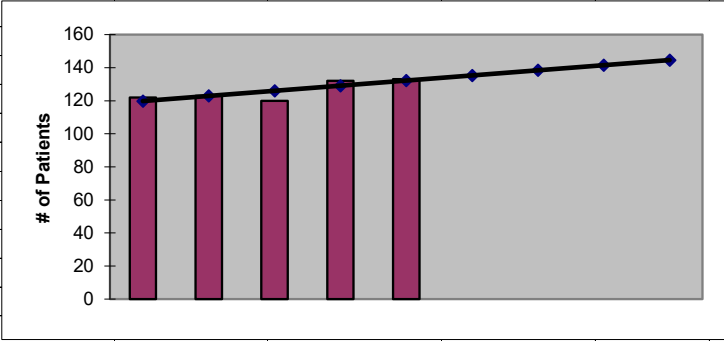


2022
Whatcom County
ESRD Need Projection Methodology

Planning Area		6 Year Utilization Data - Resident Incenter Patients					
Whatcom	2016	2017	2018	2019	2020	2021	
Whatcom County	109	122	123	120	132	133	
TOTALS	109	122	123	120	132	133	
246-310-812(4)(a)	Rate of Change		11.93%	0.82%	-2.44%	10.00%	0.76%
	6% Growth or Greater?		TRUE	FALSE	FALSE	TRUE	FALSE
	Regression Method:	Linear					
246-310-812(4)(c)		Year 1 2022	Year 2 2023	Year 3 2024	Year 4 2025	Year 5 2026	
Projected Resident Incenter Patients	from 246-310-812(4)(b)	135.30	138.40	141.50	144.60	147.70	
Station Need for Patients	Divide Resident Incenter by 4.8	28.19	28.83	29.48	30.12	30.77	
	Rounded to next whole number	29	29	30	31	31	
246-310-812(4)(d)	subtract (4)(c) from approved stations						
Existing CN Approved Stations	Total	32	32	32	32	32	
Results of (4)(c) above		29	29	30	31	31	
Net Station Need		3	3	2	1	1	
Negative number indicates need for stations							
Planning Area Facilities							
Name of Center	# of Stations						
Mt. Baker Kidney Center	26						
Ferndale Dialysis Center	6						
Total	32						
Source: Northwest Renal Network / Comagine ESRD Network 16 data 2016-2021							
Most recent year-end data: 2021 posted 03/15/2022							

**2022
Whatcom County
ESRD Need Projection Methodology**

x	y	Linear
2017	122	120
2018	123	123
2019	120	126
2020	132	129
2021	133	132
2022		135.30
2023		138.40
2024		141.50
2025		144.60
2026		147.70



SUMMARY OUTPUT

<i>Regression Statistics</i>	
Multiple R	0.81130708
R Square	0.658219178
Adjusted R Square	0.544292237
Standard Error	4.078398378
Observations	5

ANOVA					
	<i>df</i>	<i>SS</i>	<i>MS</i>	<i>F</i>	<i>Significance F</i>
Regression	1	96.1	96.1	5.77755511	0.095560036
Residual	3	49.9	16.63333333		
Total	4	146			

	<i>Coefficients</i>	<i>Standard Error</i>	<i>t Stat</i>	<i>P-value</i>	<i>Lower 95%</i>	<i>Upper 95%</i>	<i>Lower 95.0%</i>	<i>Upper 95.0%</i>
Intercept	-6132.9	2603.910608	-2.355265185	0.099827597	-14419.7057	2153.905695	-14419.7	2153.906
X Variable 1	3.1	1.289702808	2.403654532	0.095560036	-1.004409937	7.204409937	-1.00441	7.20441