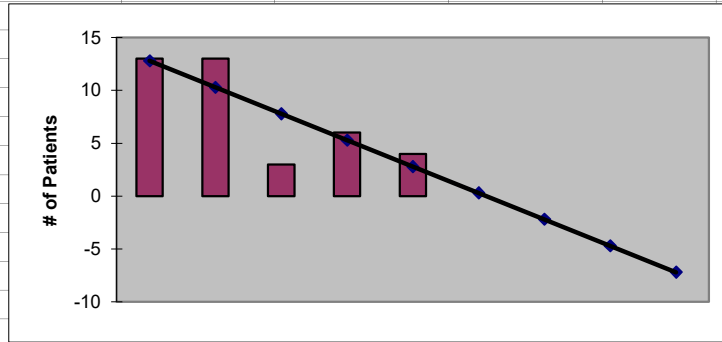




2022
Whitman County
ESRD Need Projection Methodology

Planning Area		6 Year Utilization Data - Resident Incenter Patients					
Whitman	2016	2017	2018	2019	2020	2021	
Whitman County	12	13	13	3	6	4	
TOTALS	12	13	13	3	6	4	
246-310-812(4)(a)	Rate of Change		8.33%	0.00%	-76.92%	100.00%	-33.33%
	6% Growth or Greater?		TRUE	FALSE	FALSE	TRUE	FALSE
	Regression Method:	Linear					
246-310-812(4)(c)			Year 1	Year 2	Year 3	Year 4	Year 5
			2022	2023	2024	2025	2026
Projected Resident Incenter Patients Station Need for Patients	from 246-310-812(4)(b)		0.30	-2.20	-4.70	-7.20	-9.70
	Divide Resident Incenter by 3.2		0.09	-0.69	-1.47	-2.25	-3.03
	Rounded to next whole number		1	-1	-2	-3	-4
246-310-812(4)(d)	subtract (4)(c) from approved stations						
Existing CN Approved Stations	Total		0	0	0	0	0
Results of (4)(c) above			1	-1	-2	-3	-4
Net Station Need			-1	1	2	3	4
Negative number indicates need for stations							
Planning Area Facilities							
Name of Center	# of Stations						
None	0						
Total	0						
Source: Northwest Renal Network / Comagine ESRD Network 16 data 2016-2021							
Most recent year-end data: 2021 posted 03/15/2022							

x	y	Linear
2017	13	13
2018	13	10
2019	3	8
2020	6	5
2021	4	3
2022		0.30
2023		-2.20
2024		-4.70
2025		-7.20
2026		-9.70



SUMMARY OUTPUT

<i>Regression Statistics</i>	
Multiple R	0.811962253
R Square	0.6592827
Adjusted R Square	0.545710267
Standard Error	3.281259921
Observations	5

ANOVA					
	<i>df</i>	<i>SS</i>	<i>MS</i>	<i>F</i>	<i>Significance F</i>
Regression	1	62.5	62.5	5.80495356	0.09507273
Residual	3	32.3	10.76666667		
Total	4	94.8			

	<i>Coefficients</i>	<i>Standard Error</i>	<i>t Stat</i>	<i>P-value</i>	<i>Lower 95%</i>	<i>Upper 95%</i>	<i>ower 95.0%</i>	<i>pper 95.0%</i>
Intercept	5055.3	2094.966387	2.413069742	0.094755699	-1611.818039	11722.41804	-1611.82	11722.42
X Variable 1	-2.5	1.037625494	-2.409347123	0.09507273	-5.802187421	0.802187421	-5.80219	0.802187